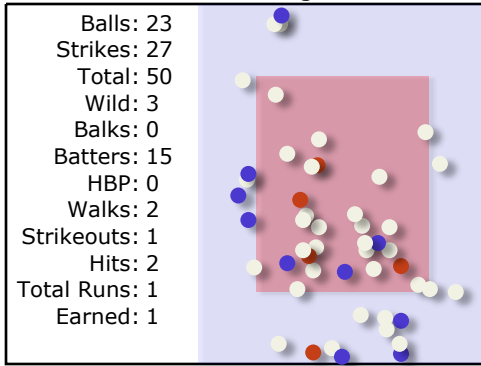


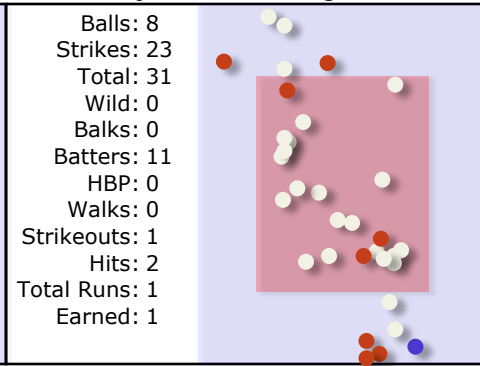
Team: <b>Simi Valley</b>				Runs: <b>2</b>	Hits: <b>4</b>	Details: Location: West Ranch Weather: Sunny Condition: Good					Notes:	
#	Player	Pos	Inn	1	2	3	4	5	6	7	8	9
3	Player 1	-	1	P6 ① 		F8 ① 	L1B 					
27	Player 2	-	1	L1B 	WP3 WP3 AB4 		4-3 ③ 					
	Player 3	-	1	F7 ② 		FC6-4 ② BB 		K ① 				
10	Player 4	-	1	P6 ③ 		WP6 AB5 FC 		L8 ② 				
8	Player 5	-	1		P4 ① 	OT6 FC 		PO1-3 ③ E5 				
	Player 6	-	1		U3 ② 	F7 ③ 		5-3 ① 				
1	Player 7	-	1		AB8 E6 		F7 ① 		P4 ② 			
31	Player 8	-	1		BB 	AB1 2B AB1 		F7 ③ 				
77	Player 9	-	1		K ③ 		F8 ② 					
				R/H	0/1	0/0	1/1	1/2	0/0	0/0	0/0	0/0
				K/BB	0/0	1/1	0/1	0/0	1/0	0/0	0/0	0/0

Team: Ranchers Fall 17-18				Runs: 7	Hits: 8	Details: Location: West Ranch Weather: Sunny Condition: Good				Notes:			
#	Player	Pos	Inn	1	2	3	4	5	6	7	8	9	
38	Ryan Camacho	9	1	4-3 ① G 1 2	BB 1 5 2 3 4		2B L 1		① 1 3 2				
24	Jovan Camacho	8	1	K ② 1 4 2 3 5	K ③ 1 2 xx		F8 ① F 4 5 1 2 3		K ② 1 2 3 4 5				
66	Christos Stefanos	2	1			F8 ① F 1 2 xx			AB4 2B AB4 L 1				
42	Will Chambers	3	1										
49	Justin Bumgarner	-	3			AB6 AB5 BB	F8 ② F 1		AB5 2B AB7 F 1				
31	Evan Gellatly	DH	5										
42	Will Chambers	3	6										
11	Garrett Monheim	7	1		AB7 AB6 HBP 1 2 AB8	AB7 AB6 BB 2 1 3 4		AB8 SB8 1B AB8 G 1	AB7 AB6 1B L 1				
31	Evan Gellatly	DH	1		6-3 ① G 2 1			F9 ① F	AB7 HBP 2 1				
49	Justin Bumgarner	3	5			FC4-6 HBP 1							
16	Nicholas Perez	4	1					F9 ② F 2 1					
	"	5	4		SB9 AB8 1B E6 G 2 4 1 3	E4 FC G 1			BB 1 2 3 4				
31	Evan Gellatly	DH	6										
8	Ryan Farr	6	1		SAC ② 2-3	6-3 ③ G 1		SB9 1B G 1	K ③ 1 2 3				
	"	4	4										
16	Nicholas Perez	5	6										
41	Justin Stadt	5	1					6-3 ③ G 2 3 1 4 5					
	"	2	4		E6 G 3 1 2		AB1 AB1 TO8 L 1						
				R/H	0/0	2/1	2/0	0/2	1/2	2/3	0/0	0/0	0/0
				K/BB	2/1	1/1	0/2	0/1	0/0	3/1	0/0	0/0	0/0

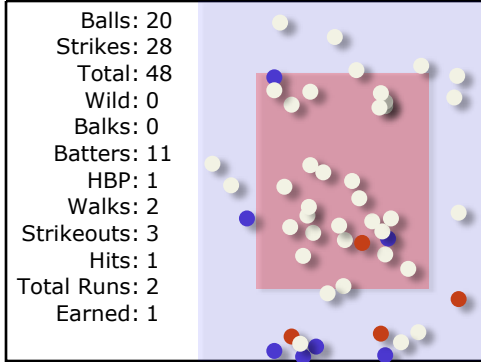
JD Callahan - 3.00 innings



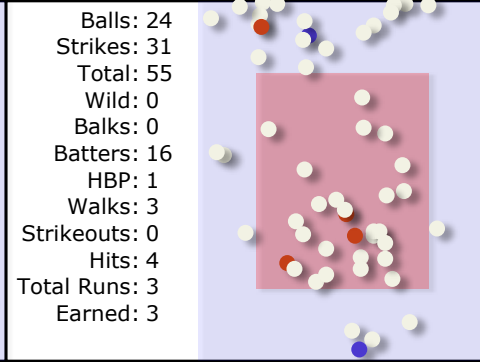
Vincent Rojas - 3.00 innings



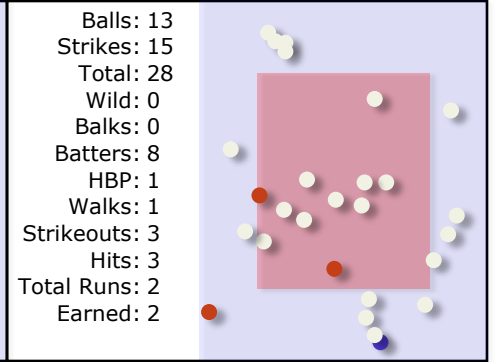
Unknown - 2.00 innings



Player 10 - 3.00 innings



Player 11 - 1.00 innings



## Pitches with Game Notes